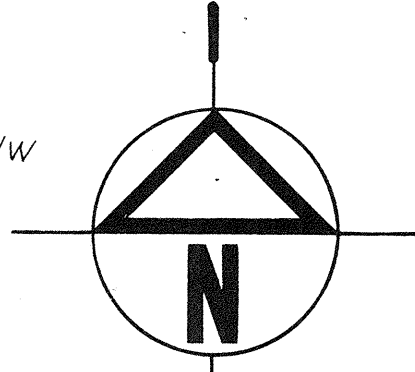


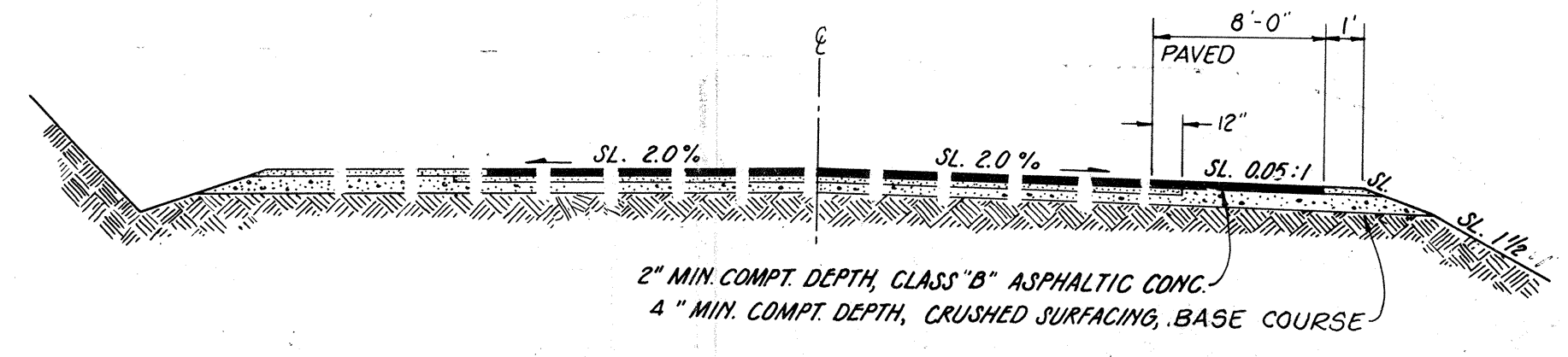
GENERAL NOTES

1. LOCATIONS SHOWN OF EXISTING UTILITIES ARE APPROXIMATE ONLY, AND IT SHALL BE THE RESPONSIBILITY OF THE CONTRACTOR TO VERIFY THE EXACT LOCATIONS OF ALL UTILITIES SO AS TO AVOID DAMAGE OR DISTURBANCE.
2. ALL WORK AND MATERIALS SHALL BE IN ACCORDANCE WITH THE LATEST EDITION OF THE STANDARDS AND SPECIFICATIONS OF SNOHOMISH COUNTY.
3. DRAINAGE STRUCTURES NOT ON PUBLIC RIGHT-OF-WAY SHALL HAVE ROUND LOCKING LIDS.
4. STORM WATER RETENTION/DETENTION FACILITIES MUST BE CONSTRUCTED AND MAINTAINED IN ACCORDANCE WITH CITY OR COUNTY REQUIREMENTS.
5. PROVIDE AND MAINTAIN TEMPORARY SEDIMENTATION COLLECTION FACILITIES TO INSURE SEDIMENT LADEN WATER DOES NOT ENTER THE NATURAL DRAINAGE SYSTEM. THESE FACILITIES MUST BE IN OPERATION PRIOR TO CLEARING AND BUILDING CONSTRUCTION, AND SATISFACTORILY MAINTAINED UNTIL CONSTRUCTION AND LANDSCAPING ARE COMPLETED AND THE POTENTIAL OF ON-SITE EROSION HAS PASSED.
6. ALL DISTURBED AREAS SUCH AS RETENTION FACILITIES, ROADWAY BACK-SLOPES AND ETC. SHALL BE SEEDED WITH A PERENNIAL GROUND COVER (GRASS) TO MINIMIZE EROSION.
7. CONCRETE PIPE (CP) SHALL BE CONCRETE NON-REINFORCED, RUBBER LINED, ASTM C-14, CL-2 CORRUGATED METAL PIPE (CMP) SHALL BE AASHTO M-136, M-197, HELICAL, 14 GADE PIPE, BEDDING TO BE CLASS C UNLESS OTHERWISE SPECIFIED.
8. RIP-RAP TO BE OF SOUND QUARRY ROCK PLACED TO A DEPTH OF ONE FOOT. ROCK AGGREGATE TO BE AS FOLLOWS:
 1/2" - 2" @ 10% - 20%
 2" - 4" @ 20% - 40%
 4" - 8" @ 40% - 70%
 ROCK BED TO BE 8' LONG x 5' WIDE MINIMUM SIZE. MINIMUM VOLUME OF ROCK BED TO BE 1.5 CY.
9. Road ditches in excess of 5% grade shall be lined with rip-rap.

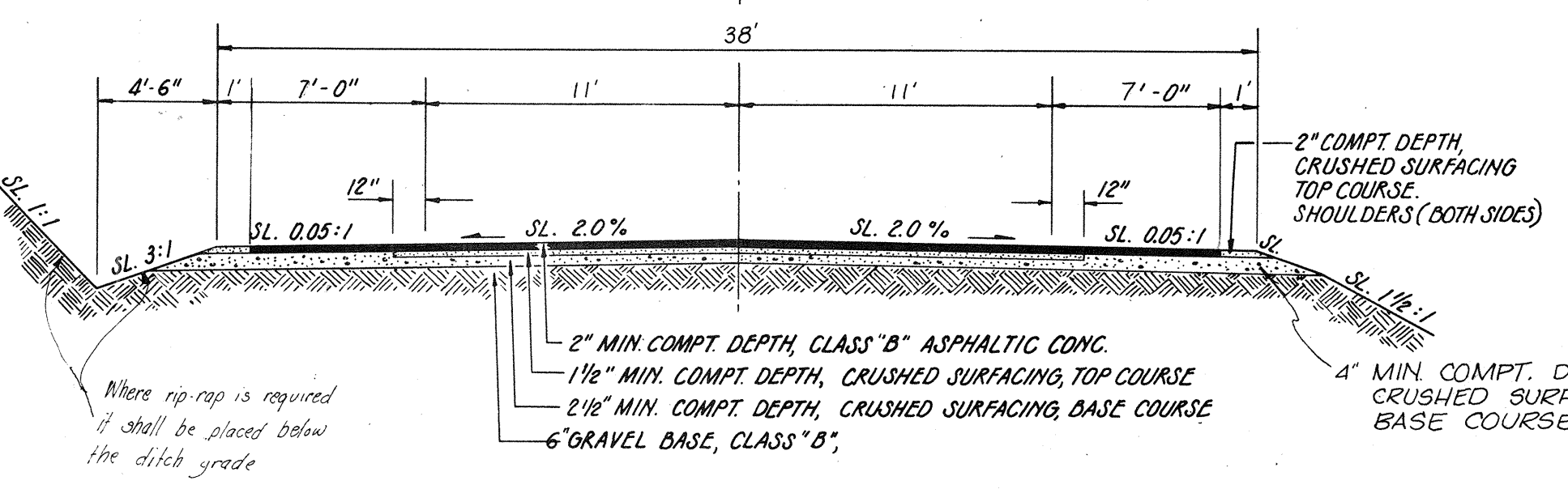
BENCH MARK: SOUTH INV. 24" CP CULV.
 283' WEST OF INT. 132ND ST. S.E. & SEATTLE
 HILL ROAD. ELEV. 421.67 (FIRCREST SEWER DISTRICT)



SCALE: 1" = 50'

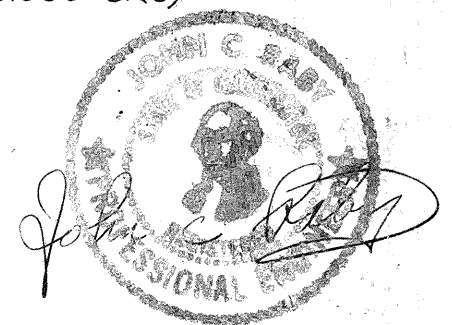


SEATTLE HILL ROAD



TYPICAL ROADWAY SECTION
 NTS

APPROVED FOR CONSTRUCTION G.E. Weed by Richard W. Andrews May 4th 1973
 DATE



Drainage O.K.
 May 4, 1979
 Tracy S. Hill

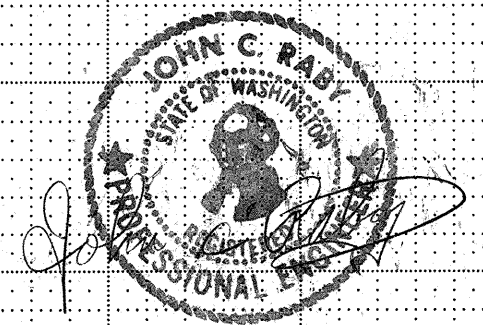
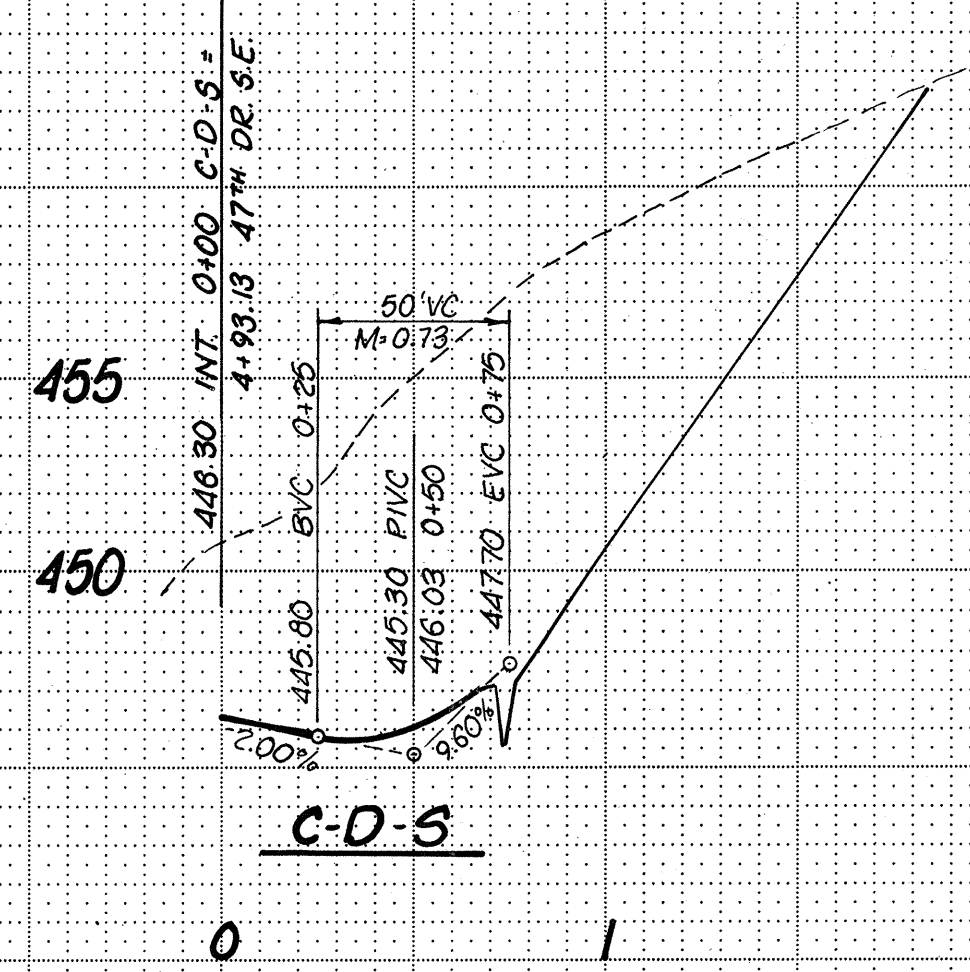
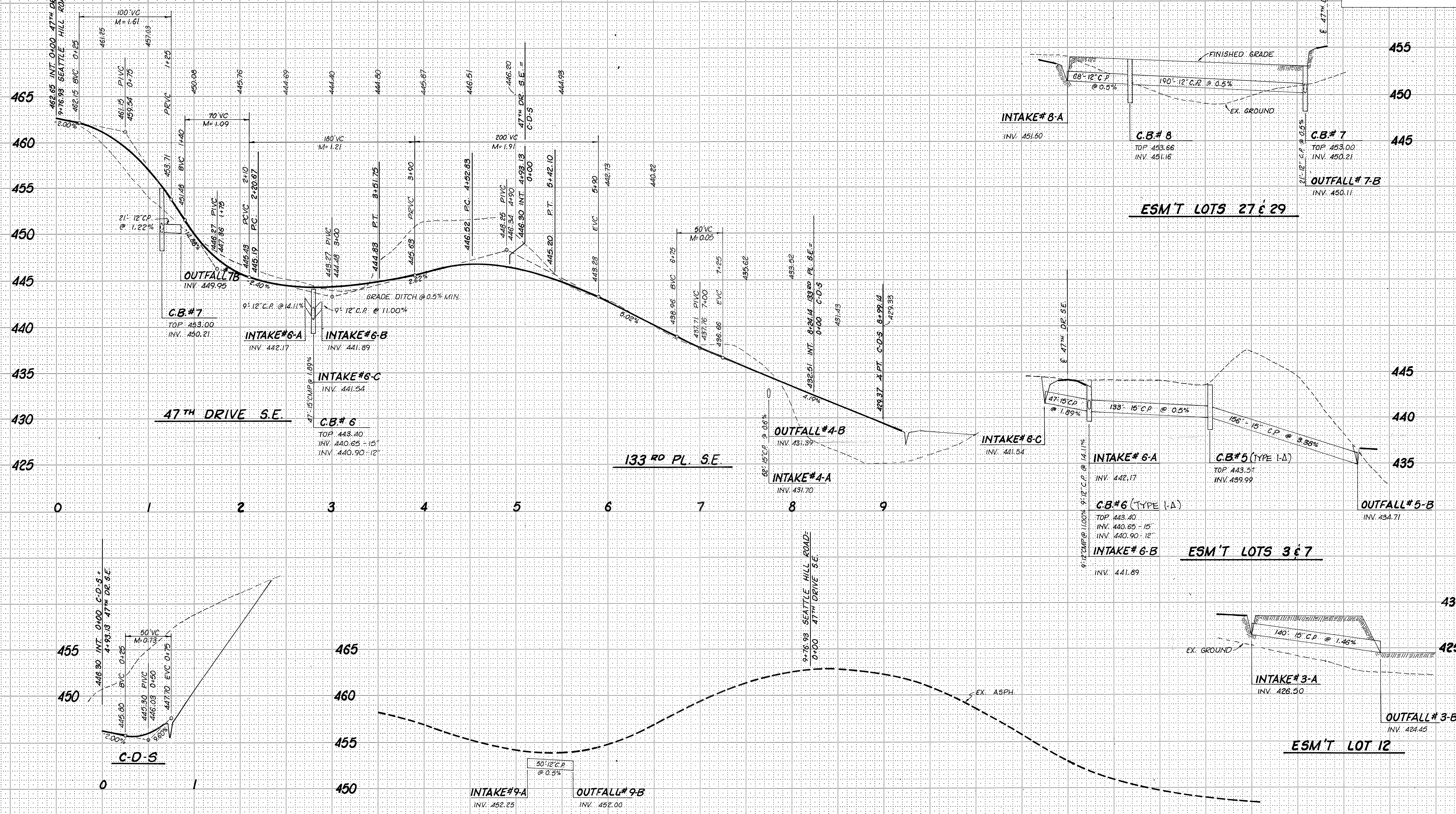
D05020

GROUP FOUR, Inc.
 19707 44th Avenue West
 Lynnwood, Washington 98036 • 206 775-4581

DRAWN BY R.C.N. 1-9-79 CHECKED BY APPROVED BY

NO.	REVISION	DATE	BY
ROAD AND STORM DRAINAGE PLAN			
IRISH WOODLANDS			
SNOHOMISH COUNTY		WASHINGTON	

SCALE: 1" = 50' HORIZ.
1" = 5' VERT.



GROUP FOUR, Inc.
 19707 44th Avenue West
 Lynnwood, Washington 98036 • 206 775-4581

SURVEYING ENGINEERING PLANNING MANAGEMENT

DRAWN BY R.C.N. 1-9-79 CHECKED BY APPROVED BY

NO.	REVISION	DATE	BY

ROAD AND STORM DRAINAGE PROFILES
IRISH WOODLANDS
 SNOHOMISH COUNTY WASHINGTON
 SHEET 2 OF 3 HDEV 2102 11-572

132ND ST. S.E.

C.B.#1
TYPE II 54" dia

C.B.#2 TYPE II 54" dia
W/ RESTRICTOR

OVERFLOW INTAKE #1-A
W/ TRASH SCREEN

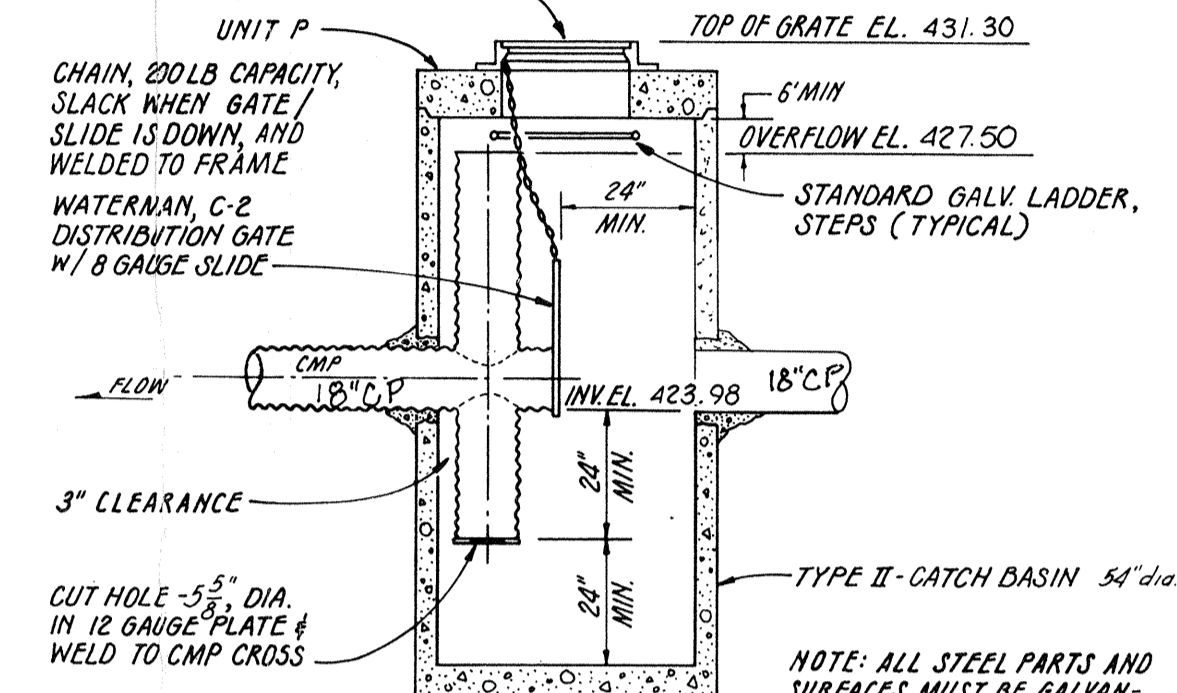
INTAKE #1-B
W/ TRASH SCREEN

DETENTION POND
VOL. 9,730 CU. FT.

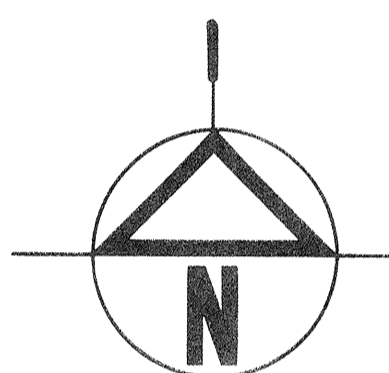
OUTFALL #3-B

12

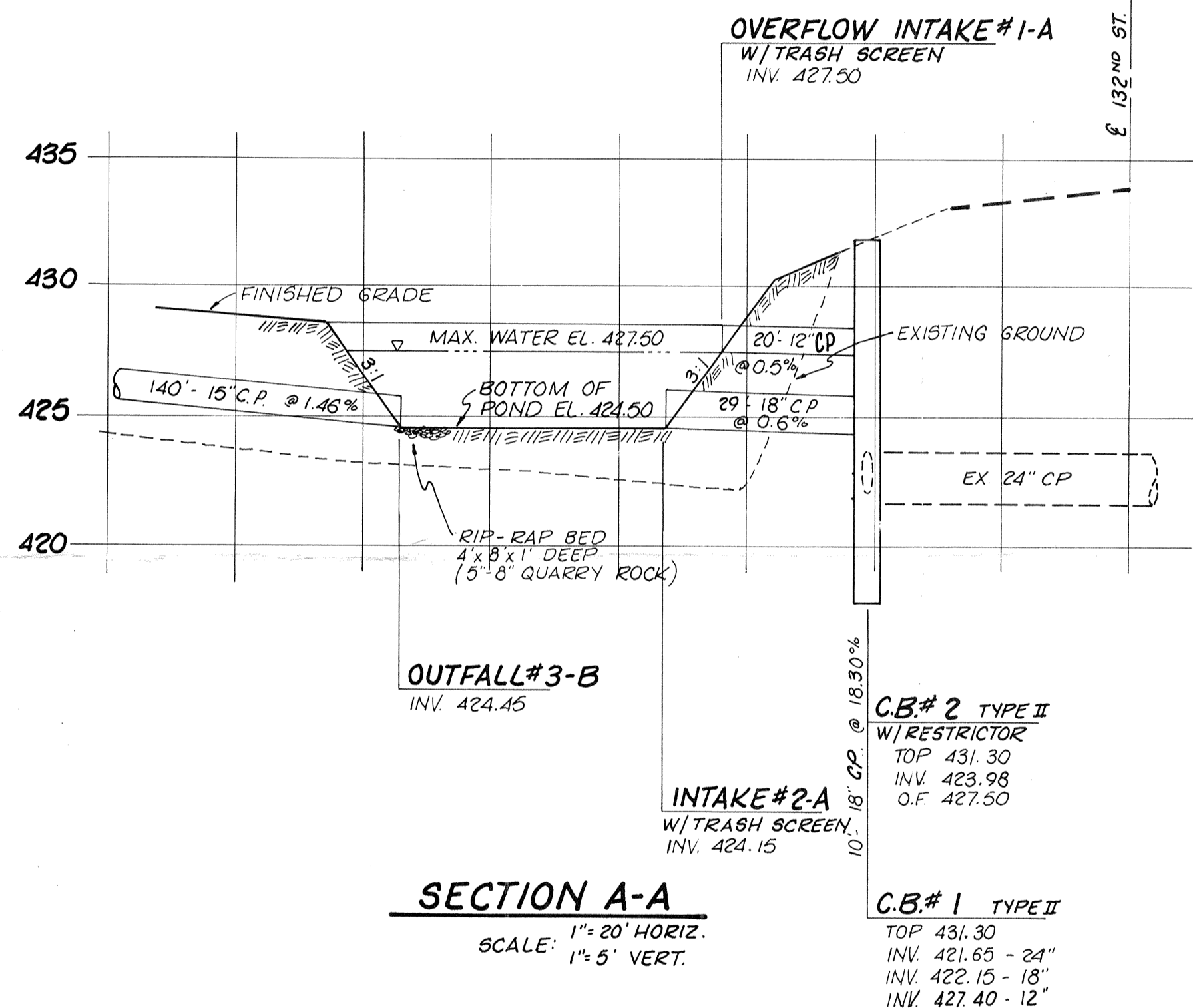
L10, OLYMPIC FOUNDRY NO. 5435 A,
OFFSET WHERE OPENING IS DIRECTLY
OVER LADDER & RESTRICTOR
IS VISIBLE @ ONE EDGE OF GRATE



CATCH BASIN NO. 2
RESTRICTOR DETAIL
NTS



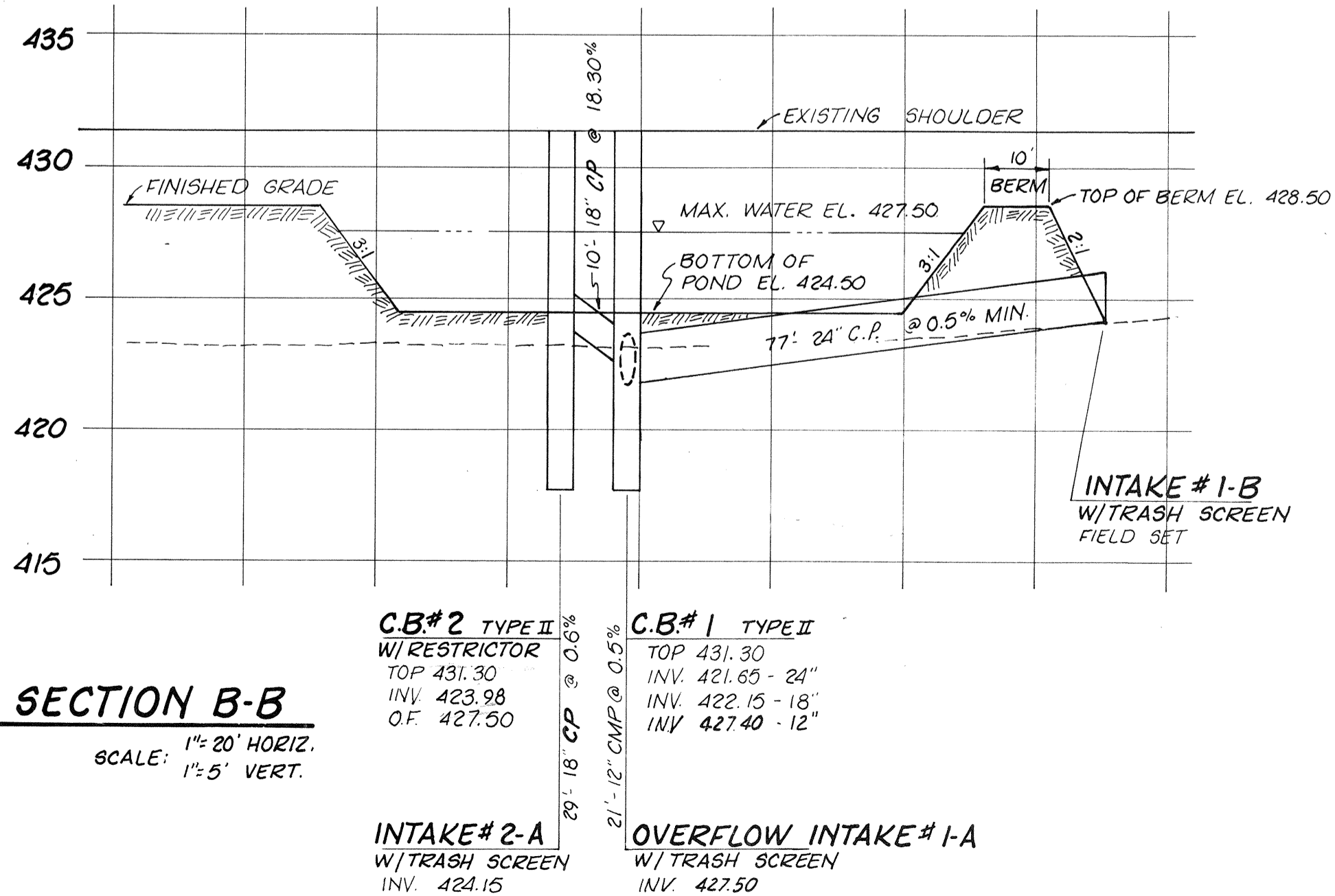
SCALE: 1" = 20'



SECTION A-A
SCALE: 1" = 20' HORIZ.
1" = 5' VERT.

C.B.#2 TYPE II
W/ RESTRICTOR
TOP 431.30
INV. 423.98
O.F. 427.50

C.B.#1 TYPE II
TOP 431.30
INV. 421.65 - 24"
INV. 422.15 - 18"
INV. 427.40 - 12"



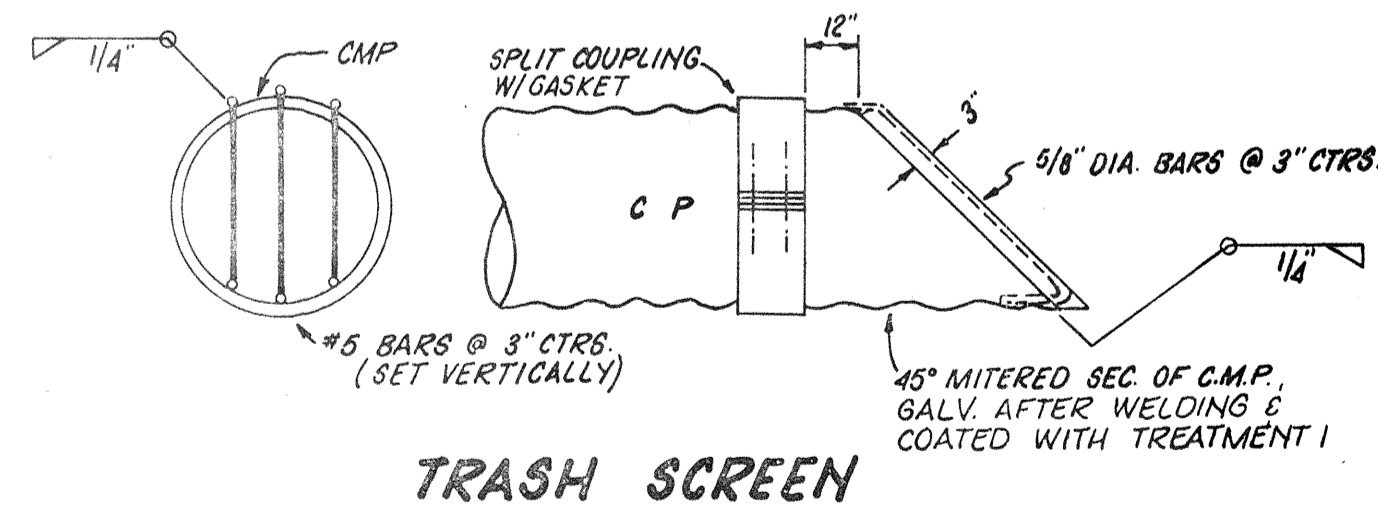
SECTION B-B
SCALE: 1" = 20' HORIZ.
1" = 5' VERT.

C.B.#2 TYPE II
W/ RESTRICTOR
TOP 431.30
INV. 423.98
O.F. 427.50

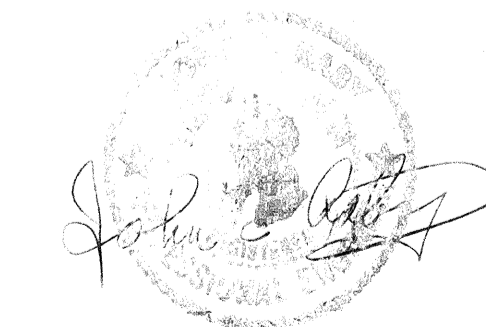
C.B.#1 TYPE II
TOP 431.30
INV. 421.65 - 24"
INV. 422.15 - 18"
INV. 427.40 - 12"

INTAKE #2-A
W/ TRASH SCREEN
INV. 424.15

OVERFLOW INTAKE #1-A
W/ TRASH SCREEN
INV. 427.50



TRASH SCREEN



D05020

<p>GROUP FOUR, Inc. 19707 44th Avenue West Lyttwood, Washington 98036 • 206 775-4581</p> <p>SURVEYING ENGINEERING PLANNING MANAGEMENT</p> <p>DRAWN BY: 1-9-79 RGN CHECKED BY: APPROVED BY:</p>	<p>NO. 1 REVISION DATE BY</p> <p>DETENTION POND & DETAILS</p> <p>IRISH WOODLANDS</p> <p>SNOHOMISH COUNTY WASHINGTON</p> <p>SHEET 2 OF 2 HDEV 2103 77.673</p>
---	--